

وزارة التخطيط والتنمية الاقتصادية

MINISTRY OF PLANNING AND ECONOMIC DEVELOPMENT



Arab Republic of Egypt

Ministry of Planning & Economic Development

MONTHLY TOTAL

PRODUCTION INDEX

Monthly Bulletin of the Production Index
of the Most Important Economic Sectors

December
2024

By
National Accounts Unit

Introduction

The preparation of a “Monthly Production Index” is a natural extension and an important development for the emerging market economy and the participation of the Private Sector.

Accordingly, the Minister of Ministry of Planning and Economic Development started the preparation of the Monthly Production Index beginning February 2002. It passed through several tests to guarantee its measure of the economy of the Arab Republic of Egypt. The base year changed to FY 2012-2013 instead of 2006-2007.

The Index includes the results of most important economic activities in Egypt. These activities are Manufacturing, Natural gas, Oil Products, Electricity, Construction, Transportation, Suez Canal and Tourism.

There has been a dire need for the compilation of the composite Production Index to demonstrate economic activities when Egypt joined Special Data Dissemination Standard (SDDS) of International Monetary Fund (IMF). These indices and the composite index enable to measure the change, trend in Egypt’s economic activities comparing with the rest of the world economies. SDDS allows investment opportunities along with acceptable loan rates for international markets.

TOTAL PRODUCTION INDEX

First: Short-term analysis:

The Total Production Index reached 116.26% in December 2024 compared with the previous month (November 2024, 113.30%), with an increase by growth rate by 2.62% this due to: -

Activity	December 2024	November 2024	Growth rate
Tourism Index	126.93	116.98	8.50%
Manufacturing Index	118.05	109.05	8.25%
Transportation Index	186.99	173.19	7.97%

However, there was a decrease in these activities:

Activity	December 2024	November 2024	Growth rate
Construction Index	96.01	101.05	-4.99%
Electricity Index	127.03	132.93	-4.44%
Suez Canal index *	71.36	73.73	-3.21%
Oil products Index	90.19	92.18	-2.16%
Natural gas Index	119.16	121.37	-1.82%

Second: Long-term analysis:

Total Production Index reached 116.26% in December2024 compared with 108.95% in December2023 with an increase rate by 6.71% this due to: -

Activity	December 2024	December 2023	Growth rate
Tourism Index	126.93	99.45	27.63%
Manufacturing Index	118.05	98.20	20.21%
Transportation Index	186.99	162.01	15.42%
Construction Index	96.01	87.35	9.91%
Natural gas Index	119.16	113.45	5.04%
Electricity Index	127.03	122.22	3.94%

[See table (1)]

However, there was a decrease in this activity:

Activity	December 2024	December 2023	Growth rate
Suez Canal index	71.36	176.75	-59.63%
Oil products Index	90.19	93.09	-3.12%

Manufacturing Index

Manufacturing analysis focusing on two directions: -

First direction: *Monthly change rate for manufacturing index according to main activities for the latest month (December2024) compared with previous month (November 2024) and compared with Monthly change rate of the corresponding month of the previous year (December 2023) with the previous month (November 2023).*

Second direction: *Annual change rate for manufacturing index according to main activities for latest month (December 2024) compared with the corresponding month of the previous year (December 2023) and compared with Annual change rate of the previous month (November2024) with the corresponding month of the previous year (November 2023).*

First: Short-term analysis:

Activities achieved an increase in *December2024* compared with *November 2024*: -

Activity	Growth rate
Manufacture of other non-metallic mineral products	16.9%
Manufacture of textiles	10.7%
Manufacture of chemicals and chemical products	6.4%
Manufacture of basic pharmaceutical products and pharmaceutical preparations	6.3%
Manufacture of electrical equipment	2.5%

In addition to the Positive growth rate in the previous activities, there was a decrease in these activities:

Activity	Growth Rate
Manufacture of food products	-4.0%
Manufacture of basic metals	-0.5%

The product of positive growth and negative growth rate in the previous activities increased by 5.7% in December2024 compared with November 2024 and increased by 3.52% in December2023 compared with November 2023.

There was an increase by 8.25% in the total manufacturing index in December2024 compared with November 2024 and there was an increase by 1.79% in December2023 compared with November 2023.

Second: Long-term analysis:

Activities growth rate increased in *December* 2024 compared with *December* 2023:

Activity	Growth Rate
Manufacture of basic pharmaceutical products and pharmaceutical preparations	41.9%
Manufacture of textile	37.4%
Manufacture of chemicals and chemical products	26.2%
Manufacture of other non-metallic mineral products	9.9%
Manufacture of food products	2.6%
Manufacture of basic metals	0.8%

In addition to the positive growth rate in the previous activities, there was a decrease in these activities:

Activity	Growth Rate
Manufacture of electrical equipment	-25.0%

The product of positive and negative growth rate in the previous activities increased by 13.54% in December2024 compared with December2023 and increased by 11.2 % in November2024 compared with November2023.

There was an increase by 20.2% in the total manufacturing index in December2024 compared with December2023 and increased by 13.0% in November2024 compared with November2023.

[See table (2)]

Tables

Table 1: Indices for Major sectors of the Egyptian Economy
Base (Year / Month FY 2012-2013) = 100

Fiscal Year	Month	Manufacture Index	Natural Gas Index	Oil Products Index	Electricity Index	Construction Index	Transportation (Excluding Suez Canal) Index	Suez Canal Index *	Tourism Index	Total Production Index
2023-2024	November	96.47	118.37	97.14	130.63	87.29	152.84	212.14	95.19	110.82
	December	98.20	113.45	93.09	122.22	87.35	162.01	176.75	99.45	108.95
2024-2025	November	109.05	121.37	92.18	132.93	101.05	173.19	73.73	116.98	113.30
	December	118.05	119.16	90.19	127.03	96.01	186.99	71.36	126.93	116.26
Long Term	%change December 24/December 23	20.21%	5.04%	-3.12%	3.94%	9.91%	15.42%	-59.63%	27.63%	6.7%
Short Term	%change December 24/November 24	8.25%	-1.82%	-2.16%	-4.44%	-4.99%	7.97%	-3.21%	8.50%	2.62%

Table 2: Manufacture index of the highest weighted activities
According ISIC 4 and producer price index (base year FY 2012-2013)

Base (Year / Month FY 2012-2013) = 100

Activity	Weight	Monthly growth rate		Annual growth rate	
		Dec -24/ Nov -24	Dec -23/ Nov -23	Dec-24/ Dec-23	Nov-24/ Nov-23
		1			
Manufacture of chemicals and chemical products	18.71%	6.4	-6.5	26.2	11.0
Manufacture of basic metals	18.05%	-0.5	5.6	0.8	7.0
Manufacture of food products	14.61%	-4.0	-6.1	2.6	0.4
Manufacture of other non-metallic mineral products	9.59%	16.9	-2.3	9.9	-8.2
Manufacture of basic pharmaceutical products and pharmaceutical preparations	6.00%	6.3	3.4	41.9	38.0
Manufacture of electrical equipment	5.07%	2.5	22.4	-25.0	-10.5
Manufacture of textiles	3.68%	10.7	6.6	37.4	32.3
Total of Pervious Activities	75.7 %	5.7	3.52	13.54	11.2
Total Manufacturing	100%	8.25	1.79	20.2	13.0

**Table 3A: Manufacturing Indices by Activity and Total Manufacturing Index
(December2023 – December2024)**

Base (Year / Month FY 2012-2013) = 100

ISIC	Activity	Weights	Dec-23	Jan-24	Feb-24	Mar-24	Apr-24	May-24	Jun-24	Jul-24	Aug-24	Sep-24	Oct-24	Nov-24	Dec-24
20	Manufacture of chemicals and chemical products	18.71	74.89	81.84	85.7	116.93	86.928	84.9	74.81	80.96	71.61	76.62	86.61	88.84	94.53
24	Manufacture of basic metals	18.05	60.29	52.48	54.1	59.898	62.139	49.2	54.78	57.26	62.19	59.93	55.52	61.09	60.78
10	Manufacture of food products	14.61	111.75	123.34	146.7	152.80	124.18	119.1	138.29	141.40	114.82	120.18	127.74	119.47	114.69
23	Manufacture of other non-metallic mineral products	9.59	82.52	82.29	76.1	74.007	66.055	86.6	84.03	89.15	83.49	74.30	79.84	77.57	90.68
21	Manufacture of basic pharmaceutical products and pharmaceutical preparations	6.00	111.28	85.49	87	92.216	78.368	88.1	107.15	120.08	122.17	130.03	148.57	148.60	157.93

27	Manufacture of electrical equipment	5.07	127.56	114.35	104.4	87.02	61.921	79.1	74.05	93.43	83.30	78.92	85.10	93.28	95.61
13	Manufacture of textiles	3.68	129.84	122.81	122.2	148.99	143.88	152.9	149.46	195.71	159.05	185.42	166.32	161.24	178.43
26	Manufacture of computer, electronic and optical products	3.12	176.76	112.46	157.1	104.34	62.121	124.2	98.42	100.69	164.47	153.94	189.91	127.44	192.82
11	Manufacture of beverages	2.73	182.81	225.74	357.4	352.75	395.34	583.4	523.29	375.50	513.60	310.89	345.14	262.92	278.25
14	Manufacture of wearing apparel	2.54	154.3	133.47	124	184.17	165.07	178.3	205.26	205.53	233.13	217.88	223.54	217.54	253.41
17	Manufacture of paper and paper products	2.44	61.96	54.01	51.6	66.19	63.229	68.2	56.45	71.56	72.94	72.67	77.73	75.08	79.72
22	Manufacture of rubber and plastics products	2.15	68.22	59.79	64.4	71.548	67.707	70.7	63.80	81.08	73.78	84.34	74.53	69.51	66.04
25	Manufacture of fabricated	2.10	53.09	44.15	45.6	42.388	45.122	53.8	47.88	65.15	54.00	52.13	54.12	66.10	61.44

	metal products, except machinery and equipment														
12	Manufacture of tobacco products	2.06	101.82	112.04	102.8	89.102	79.59	89.3	126.70	124.47	134.86	147.63	159.36	172.47	166.95
29	Manufacture of motor vehicles, trailers and semi-trailers	1.91	170.93	176.52	167.2	157.62	129.15	132.9	197.83	294.09	247.80	326.05	307.85	285.89	311.99
28	Manufacture of machinery and equipment n.e.c.	1.68	82.21	75.35	88.3	83.736	92.722	93.4	88.56	109.51	102.92	78.09	83.30	94.22	129.63
8	Other mining and quarrying	1.16	182.36	248.85	162.9	155.71	127.94	137.8	144.50	155.51	116.21	126.03	149.16	114.27	138.85
18	Printing and reproduction of recorded media	0.68	91.28	109.42	85.8	91.938	88.031	102.7	113.85	115.26	122.90	159.49	146.00	128.19	156.62
31	Manufacture of furniture	0.50	461.9	119.59	156.7	134.60	147.07	163.1	135.37	156.38	141.47	179.29	203.67	188.68	208.56
30	Manufacture of other transport	0.47	137.77	163.83	214.8	119.97	165.88	1054.0	871.04	96.28	61.28	78.30	152.20	322.76	583.33

	equipment														
32	Other manufacturing	0.32	40.71	58.13	46.9	56.453	47.426	45.0	65.94	68.61	66.18	80.21	74.65	66.39	73.22
19	Manufacture of coke and refined petroleum products	0.21	0.0	0.0	0.0	0.0	0.0	0.0	0.00	0.00	0.00	0.00	0.00	0.00	0.00
16	Manufacture of wood and of products of wood and cork, except furniture	0.16	19.85	32.05	35.6	29.892	39.407	35.0	41.18	35.17	47.74	55.08	33.12	28.68	32.89
15	Manufacture of leather and related products	0.07	40.49	34.47	32.1	39.781	28.297	36.3	34.72	43.35	45.35	43.93	38.48	46.36	54.01
	Total Manufacturing	100	98.20	94.94	102.20	109.33	95.47	108.27	109.55	111.45	109.13	106.73	112.89	109.05	118.05

Source: Monthly Manufacturing Establishment survey (CAPMAS)

Charts

Chart 1 : Manufacturing Index & Total Production Index(December2024-December2023)
 Base (Year / Month FY 2012-2013) = 100

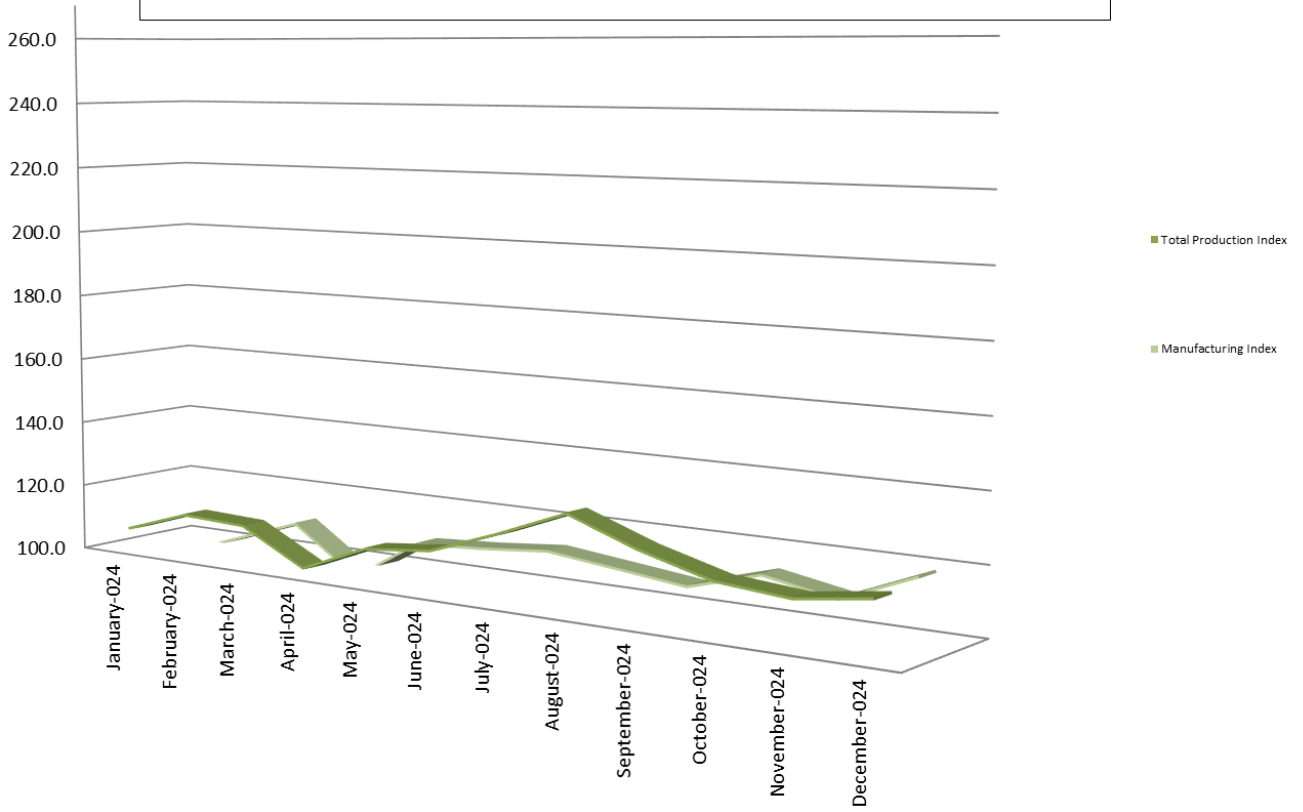


Chart 2: Total Manufacturing Index (December2024-December2023)
Base (Year / Month FY 2012-2013)= 100

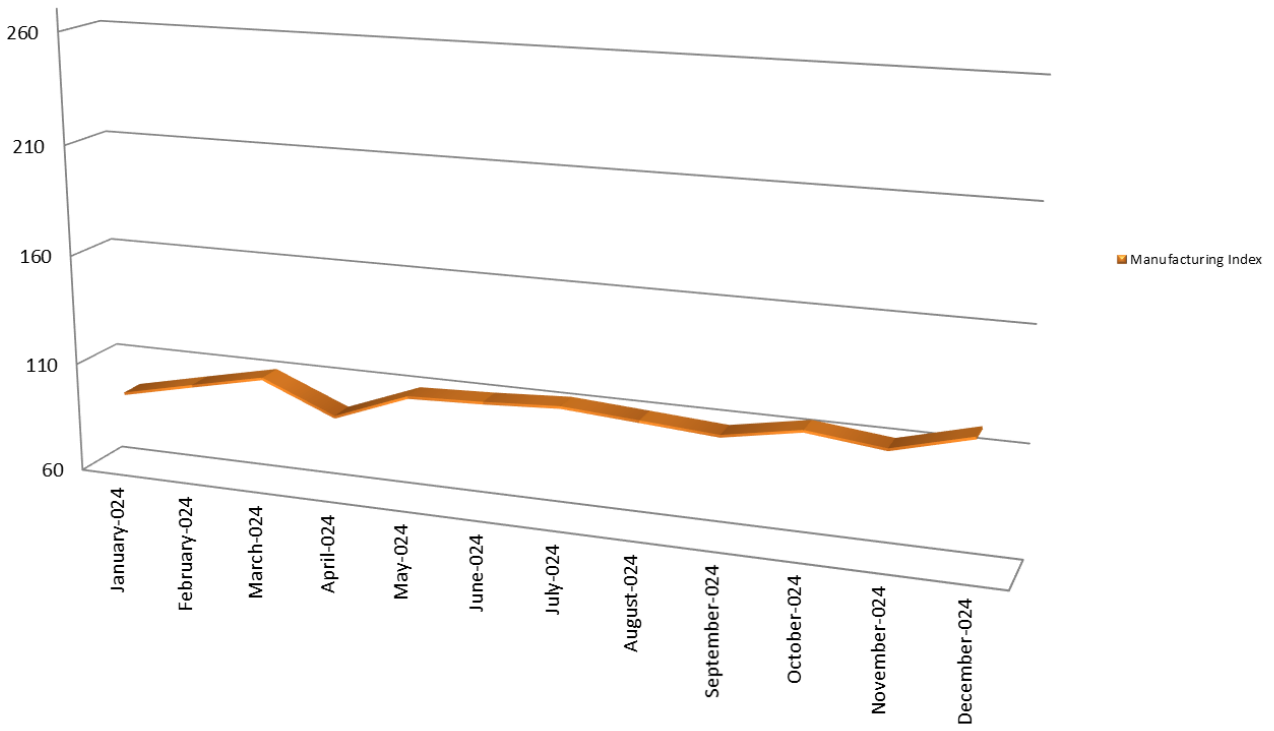


Chart 3A: Major Manufacturing Activities Indices (December 2024-December 2023)
 Base (Year / Month FY 2012-2013) = 100

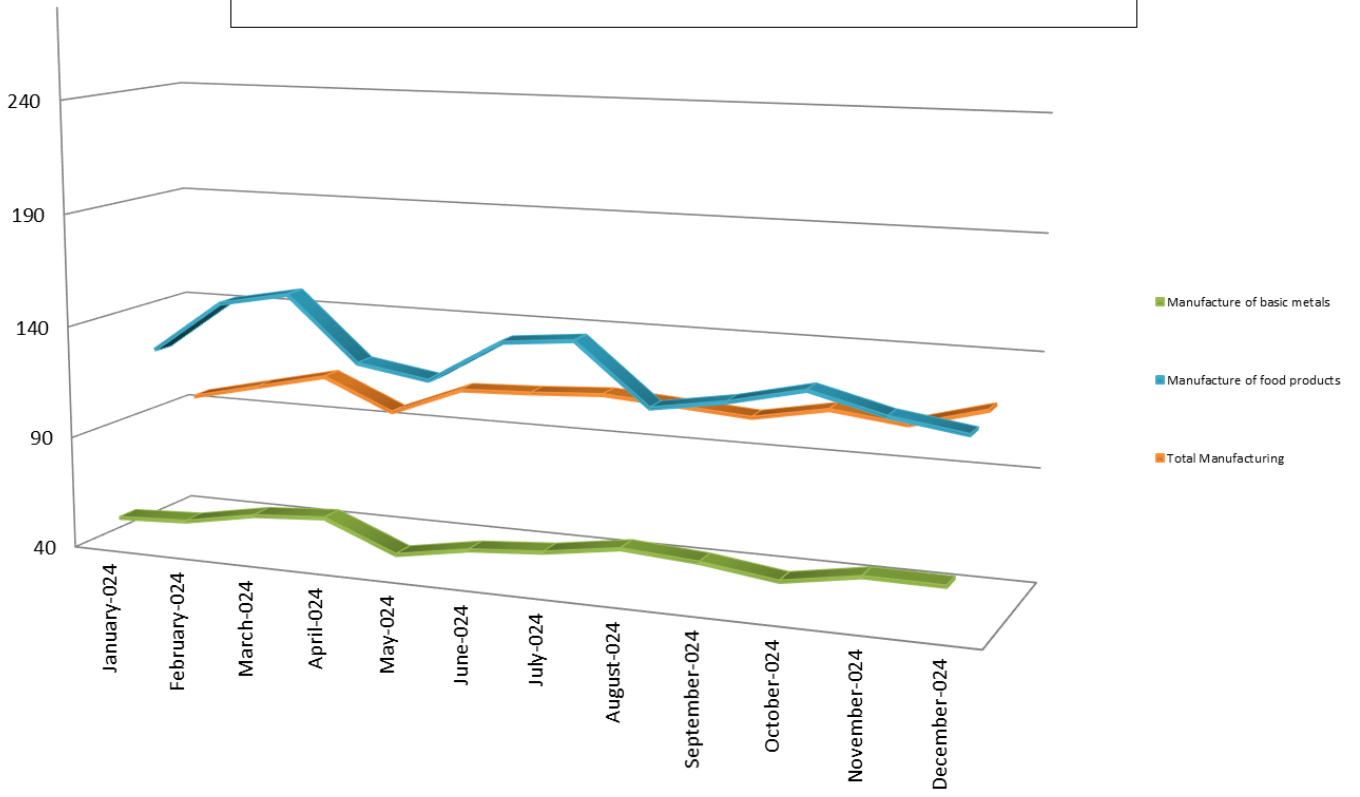
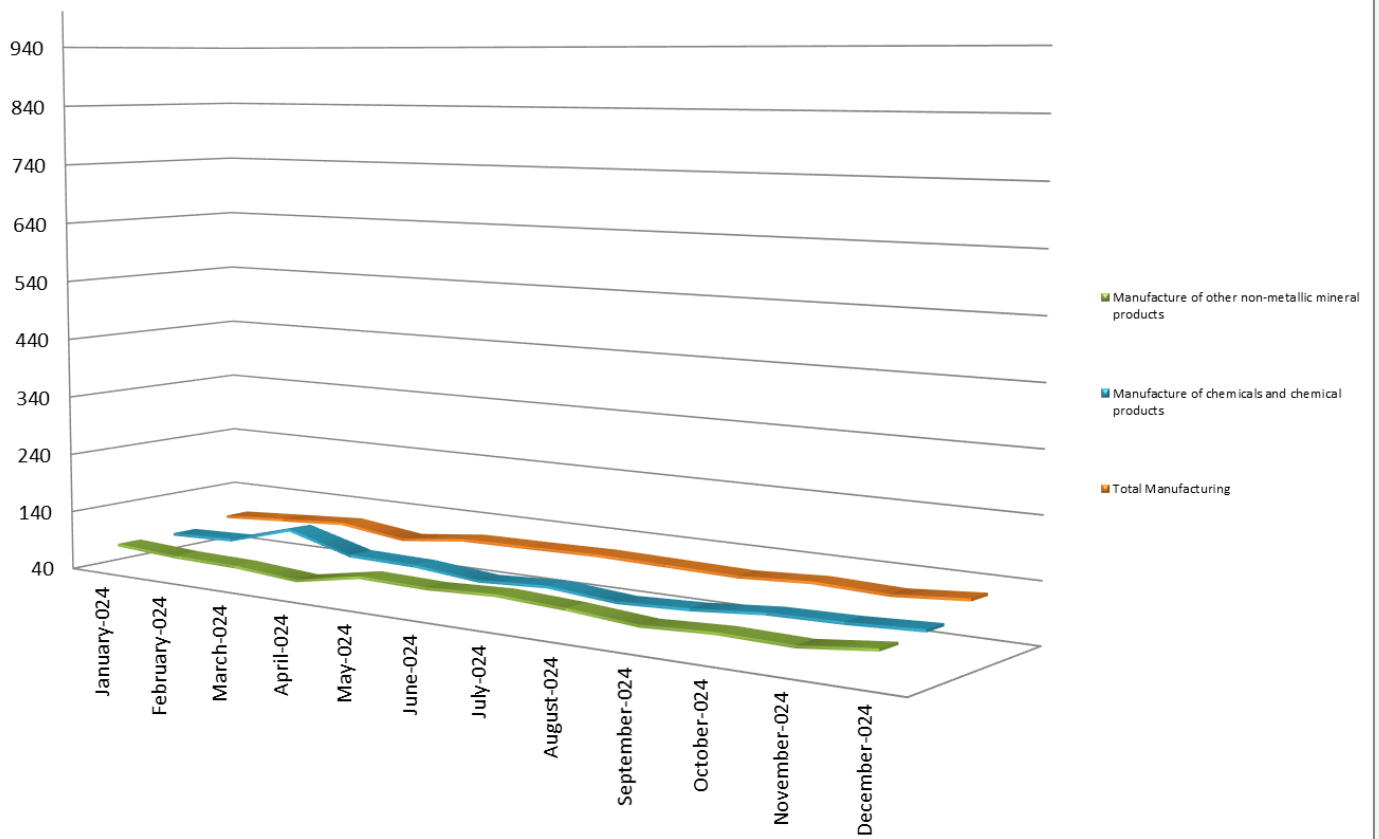


Chart 3B: Major Manufacturing Activities Indices (December 2024-December 2023)
 Base (Year / Month FY 2012-2013) = 100



Database

Table 1: Indices for Major sectors of the Egyptian Economy from FY 2012-2013

Base (Year / Month FY 2012-2013) = 100

Fiscal Year	Month	Manufacture Index	Natural Gas Index	Oil Products Index	Electricity Index	Construction Index	Transportation (Excluding Suez Canal) Index	Suez Canal Index *	Tourism Index	Total Production Index
2012 - 2013	July	100.00	100.00	100.00	100.00	100.00	100.00	100.00	100.00	100.00
	August	100.00	100.00	100.00	100.00	100.00	100.00	100.00	100.00	100.00
	September	100.00	100.00	100.00	100.00	100.00	100.00	100.00	100.00	100.00
	October	100.00	100.00	100.00	100.00	100.00	100.00	100.00	100.00	100.00
	November	100.00	100.00	100.00	100.00	100.00	100.00	100.00	100.00	100.00
	December	100.00	100.00	100.00	100.00	100.00	100.00	100.00	100.00	100.00
	January	100.00	100.00	100.00	100.00	100.00	100.00	100.00	100.00	100.00
	February	100.00	100.00	100.00	100.00	100.00	100.00	100.00	100.00	100.00
	March	100.00	100.00	100.00	100.00	100.00	100.00	100.00	100.00	100.00
	April	100.00	100.00	100.00	100.00	100.00	100.00	100.00	100.00	100.00
	May	100.00	100.00	100.00	100.00	100.00	100.00	100.00	100.00	100.00
	June	100.00	100.00	100.00	100.00	100.00	100.00	100.00	100.00	100.00
2013 - 2014	July	88.89	98.25	105.25	99.02	87.22	80.78	99.10	70.13	91.75
	August	83.54	96.36	95.92	99.50	112.86	72.34	101.88	56.72	89.38
	September	101.33	97.02	91.25	100.97	130.75	64.68	101.54	22.69	92.44
	October	98.82	96.43	97.41	98.70	82.61	71.06	105.17	41.73	89.68
	November	101.40	97.00	100.73	98.93	102.59	88.53	108.51	50.73	95.48
	December	105.46	95.79	102.46	104.68	93.70	97.80	103.53	56.41	97.01
2014 - 2015	January	96.18	98.40	101.38	104.20	109.45	97.13	106.99	68.37	97.37
	February	101.23	96.71	105.67	103.91	110.26	91.21	90.41	65.62	97.82
	March	114.97	96.41	105.49	107.07	127.58	92.21	108.47	63.89	104.42
	April	105.32	91.84	100.95	106.68	84.75	103.32	108.94	75.14	97.34
	May	108.12	91.02	105.58	105.24	101.26	176.69	107.67	80.46	106.71
	June	108.53	88.55	112.42	96.93	131.74	98.72	109.71	81.11	104.11
2014 - 2015	July	94.29	98.25	107.57	101.24	66.87	93.64	111.34	77.18	93.81
	August	99.56	85.74	104.79	99.03	185.87	114.67	114.20	93.78	108.03
	September	101.03	89.24	115.02	101.03	104.57	101.42	107.90	83.25	100.09
	October	98.69	91.06	101.45	102.26	80.77	97.72	108.85	82.30	94.87
	November	105.51	96.25	105.45	102.01	92.39	141.64	108.61	76.92	102.81
	December	103.27	91.77	99.22	104.53	73.89	111.49	104.92	68.53	95.16

2014-2018										
Year	2014			2015			2016			2017
	Q1	Q2	Q3	Q1	Q2	Q3	Q1	Q2	Q3	Q4
2015	January	94.82	91.76	102.25	105.08	91.06	114.76	107.33	64.52	95.02
	February	97.08	90.37	113.04	103.82	111.31	104.80	101.79	65.14	98.16
	March	112.07	90.46	109.94	108.72	144.72	106.58	103.12	71.07	106.47
	April	103.00	88.15	100.81	111.32	87.06	98.29	103.94	84.58	96.50
	May	107.36	92.62	102.59	110.00	138.04	113.03	102.62	93.96	106.14
	June	94.05	92.12	106.87	98.89	98.88	95.21	106.67	86.81	96.40
2016	July	95.22	89.94	115.32	105.06	68.12	105.97	101.06	82.46	94.92
	August	106.58	90.95	101.11	107.53	198.10	118.94	103.47	83.65	111.20
	September	106.94	92.53	111.03	111.12	95.37	96.20	103.10	72.38	99.75
	October	106.23	92.65	106.09	110.71	99.12	94.14	101.38	70.01	98.73
	November	115.79	98.96	127.34	111.19	129.78	97.20	100.17	44.16	107.36
	December	107.99	94.50	107.59	109.53	82.54	101.17	101.08	33.97	95.60
2017	January	100.54	94.86	110.16	111.08	142.03	105.20	101.65	31.30	100.32
	February	99.22	93.17	125.30	111.04	122.26	104.00	106.95	31.26	100.02
	March	122.60	92.67	120.95	115.09	120.39	99.37	97.30	33.28	105.43
	April	102.66	91.81	108.36	119.08	87.96	98.54	98.23	33.28	94.19
	May	111.92	97.11	112.94	119.11	127.40	110.13	90.77	39.63	103.94
	June	96.50	102.37	117.41	116.99	87.15	94.08	103.48	30.27	95.34
2018	July	93.65	100.50	115.25	114.25	36.37	98.02	99.05	42.18	89.48
	August	112.07	101.12	111.37	118.54	187.93	115.29	100.22	41.74	111.86
	September	104.46	104.13	123.91	114.33	143.36	91.82	95.70	39.67	105.08
	October	107.15	103.60	110.66	111.54	130.98	92.69	94.36	37.21	102.09
	November	124.84	102.41	105.10	110.22	94.71	92.10	95.46	36.55	102.26
	December	114.35	99.91	107.08	115.32	74.17	93.49	97.60	43.67	97.86
2019	January	109.78	102.98	110.39	114.59	106.91	101.47	97.56	48.29	102.07
	February	107.59	105.72	126.92	106.77	101.18	103.98	100.13	54.22	104.45
	March	114.98	101.34	120.20	107.91	111.07	96.49	104.05	54.29	105.35
	April	107.22	107.42	111.88	108.79	86.52	101.34	105.37	63.38	101.66
	May	108.65	112.37	99.63	104.44	137.19	118.30	100.39	61.76	107.30
	June	102.70	113.48	101.55	91.24	98.67	103.08	105.59	55.88	100.02
2020	July	106.02	112.53	101.37	110.84	108.84	108.32	103.23	73.86	104.45
	August	116.45	128.23	102.95	112.73	186.73	108.35	105.37	83.03	119.97
	September	115.55	111.10	110.80	114.04	87.04	102.61	105.42	75.83	106.07
	October	122.31	110.43	98.52	111.52	121.86	105.18	106.97	67.87	109.16
	November	120.12	110.65	99.10	112.95	109.08	106.21	113.49	64.66	107.47
	December	114.24	109.25	97.26	111.37	100.68	114.29	111.05	70.56	105.28
2021	January	109.29	114.51	97.41	108.99	93.20	111.44	111.55	71.74	103.91
										Page 22

	February	110.19	112.58	108.58	111.06	107.97	103.69	116.12	75.44	107.04
	March	124.85	110.76	101.00	112.37	110.97	101.71	113.65	80.20	110.29
	April	111.41	110.89	87.85	115.16	90.84	103.20	118.03	87.99	103.30
	May	113.94	120.22	97.41	112.68	92.72	108.17	114.84	84.66	107.46
	June	103.25	121.88	101.01	110.25	81.72	94.27	115.45	96.78	103.89
	2018	July	111.26	125.24	87.64	110.63	101.25	109.46	114.13	109.91
August		113.16	123.07	89.25	114.20	126.30	123.89	112.45	114.57	113.77
September		118.57	125.44	92.25	115.67	116.84	103.19	114.47	101.44	112.68
October		116.62	119.57	92.28	113.07	90.97	108.76	114.22	88.92	107.53
November		117.85	118.39	89.25	109.94	95.44	111.67	111.80	81.38	107.02
December		117.67	114.26	87.36	109.81	91.78	119.14	111.05	90.13	106.77
2019	January	111.93	118.34	88.83	105.88	94.89	114.47	115.70	80.23	105.29
	February	110.61	116.33	97.04	106.29	103.00	114.19	114.76	92.07	107.58
	March	128.29	119.66	96.99	106.80	108.04	104.44	110.46	93.13	113.07
	April	118.03	116.70	86.83	105.44	95.47	110.46	125.44	107.90	108.90
	May	120.82	121.97	86.43	101.62	84.94	113.79	124.04	101.64	109.12
	June	107.84	117.91	84.55	91.57	104.48	108.64	125.73	120.45	107.10
2019	July	116.44	119.24	87.96	103.33	89.11	109.83	123.91	122.37	109.45
	August	117.73	119.46	87.52	108.96	122.46	129.74	122.95	125.25	115.34
	September	116.89	116.32	84.41	107.74	116.05	123.46	117.80	109.93	111.25
	October	116.93	115.90	85.17	111.73	89.38	128.31	116.23	97.86	107.98
	November	119.05	115.22	81.46	108.78	103.07	133.39	117.98	89.90	109.02
	December	118.48	113.07	78.79	104.95	92.94	141.21	114.73	94.20	107.64
2020	January	121.92	121.59	80.84	105.72	95.39	146.53	122.71	92.74	111.60
	February	115.00	121.97	90.09	109.98	113.77	143.05	122.09	96.34	113.19
	March	111.17	111.98	85.52	102.04	127.43	120.18	111.34	38.60	103.34
	April	93.86	107.29	72.55	95.19	75.41	95.49	122.65	1.38	84.98
	May	86.60	112.58	68.24	94.47	81.16	90.91	109.15	4.10	83.07
	June	104.70	116.89	63.33	82.84	89.54	111.76	102.52	5.59	90.39
2020	July	93.73	119.17	75.25	98.25	75.04	134.46	100.32	7.81	90.52
	August	95.51	119.88	72.98	105.98	134.36	159.60	103.49	19.82	100.53
	September	98.97	123.12	73.70	109.33	88.87	134.32	106.85	21.80	95.93
	October	96.94	120.96	77.50	109.68	80.28	133.64	110.63	25.29	95.02
	November	97.23	118.96	76.12	109.22	115.62	139.56	119.72	24.20	98.96
	December	100.32	117.23	78.04	105.87	79.28	146.25	114.70	28.00	96.52
	January	98.70	122.75	77.90	103.36	105.56	152.54	122.36	33.42	101.06
	February	104.09	123.22	82.83	101.54	96.71	148.47	125.53	33.51	102.32
Page 23										

Comprehensive Financial Performance Report - Q3 2023										
Year	Quarter	Region A			Region B			Region C		
		Q1	Q2	Q3	Q1	Q2	Q3	Q1	Q2	Q3
2021	March	118.98	124.83	82.13	105.86	114.78	140.07	122.63	42.30	108.88
	April	109.10	123.03	71.70	103.35	75.24	144.13	136.32	49.99	101.33
	May	102.89	124.46	76.47	104.33	89.65	148.52	121.46	57.17	102.40
	June	117.39	124.52	80.13	103.00	104.11	137.79	123.85	62.48	108.37
2021	July	104.98	125.26	85.07	108.21	68.83	145.34	122.79	70.18	103.37
	August	113.56	126.95	80.24	116.26	182.75	167.83	126.00	79.33	120.45
	September	115.74	126.30	90.60	117.80	95.97	146.12	128.95	81.42	112.09
	October	108.44	117.18	85.57	115.95	110.86	139.34	124.78	90.92	108.91
	November	110.06	116.97	89.63	111.16	96.59	146.72	140.77	90.35	109.53
	December	115.15	112.41	87.96	107.53	82.98	153.37	130.78	85.00	107.94
2021	January	112.46	121.47	89.57	107.96	101.60	160.60	134.71	75.49	111.13
	February	110.14	120.62	106.15	107.95	110.22	156.52	145.70	76.23	113.98
2022	March	119.43	116.46	103.62	109.96	115.14	142.84	147.69	69.66	114.51
	April	109.01	117.76	98.44	109.53	68.35	147.90	155.26	75.97	107.26
	May	112.03	117.38	92.37	103.77	96.28	151.08	149.30	97.70	111.63
	June	117.35	126.80	92.96	100.99	104.57	154.23	163.40	101.25	117.07
2022	July	102.92	121.48	97.69	121.67	89.15	157.31	162.96	112.75	112.94
	August	117.71	121.36	94.97	127.26	176.71	164.56	166.95	125.42	128.04
	September	115.29	114.73	108.61	131.08	100.58	148.52	157.59	108.68	117.21
	October	109.97	108.54	106.05	130.18	106.51	143.90	160.14	103.48	113.92
	November	110.45	115.08	102.13	125.00	97.81	150.99	174.22	89.61	113.65
	December	108.58	111.24	100.67	117.18	71.90	160.06	173.58	99.15	110.59
2022	January	105.08	116.28	100.07	117.43	96.76	156.79	198.62	94.20	113.50
	February	106.49	111.87	102.70	116.76	84.60	157.98	198.64	104.40	113.09
2023	March	108.49	118.06	103.77	118.50	86.96	145.47	205.03	104.67	114.68
	April	94.29	119.08	84.09	116.10	55.63	147.07	222.97	119.88	106.46
	May	104.71	121.76	91.77	118.21	88.47	151.47	216.39	135.44	116.13
	June	101.76	127.91	93.97	120.34	82.36	140.67	214.06	129.51	114.81
2023	July	103.04	125.89	104.14	129.86	77.44	147.23	208.61	133.18	116.84
	August	104.91	124.41	110.42	139.50	152.49	167.94	198.97	146.37	128.68
	September	100.71	124.06	104.97	138.10	91.94	144.04	196.78	129.93	116.73
	October	96.78	116.63	99.02	137.72	112.23	139.81	198.87	111.69	113.51
	November	96.47	118.37	97.14	130.63	87.29	152.84	212.14	95.19	110.82
	December	98.20	113.45	93.09	122.22	87.35	162.01	176.75	99.45	108.95
2023	January	94.94	118.47	94.46	113.49	93.13	162.37	106.22	98.63	106.34
	February	102.21	125.65	108.55	124.49	90.31	163.65	91.87	114.72	113.06
	March	109.33	122.54	105.18	121.22	93.54	158.25	82.70	101.40	112.26
Overall Summary: Strong performance across all regions, with Q3 2023 showing significant growth in Region C.										
Page 24										

2024	April	95.47	121.04	84.80	120.63	55.79	154.12	81.36	120.13	101.92
	May	108.27	120.56	85.26	123.92	91.80	155.73	76.69	131.59	110.44
	June	109.55	116.92	101.61	125.95	98.10	142.74	77.04	134.21	112.56
2024	July	111.45	123.62	123.98	143.83	87.56	167.54	73.31	142.13	120.05
2025	August	109.13	121.39	118.07	153.18	161.07	185.67	75.71	151.05	128.41
	September	106.73	119.57	126.68	152.38	112.65	171.45	73.35	133.66	120.87
	October	112.89	119.20	100.36	144.55	98.44	161.75	72.69	124.22	115.10
	November	109.05	121.37	92.18	132.93	101.05	173.19	73.73	116.98	113.30
	December	118.05	119.16	90.19	127.03	96.01	186.99	71.36	126.93	116.26

Methodology

The current methodology for the preparation of the Monthly Production Index:

A monthly Total Production index will enable decision makers to monitor, track and control the development of several economic sectors of Egyptian economy. This monthly composite index includes monthly indicators for the following sectors: construction, electricity, Suez Canal, manufacturing, oil products, natural gas, transportation and tourism. It provides timely information on activity in the economy.

To derive the composite index, each component was multiplied by the relative weight of each sector in GDP, based on SNA'1993 and its adjustment SNA'2008 methodology and 2012/2013 values.

Note: Tourism Satellite Account which prepared by the National Account Unit in Ministry of Planning and Economic Development for 2013-2012 is used to get the relative weight of tourism sector in 2012/2013.

Major Economic sectors-components of the Total Production Index:

Manufacture:

The index for manufacturing is based on the monthly manufacturing production survey developed by the staff of the industrial Statistics Department at CAPMAS. The sample field survey has been conducted for 586 companies that cover 70% of the manufacture activity to get the monthly production index.

Natural Gas

The index for natural gas is based on data provided on the monthly basis by ministry of petroleum. The index is depending on consumed amounts of gas.

Oil Products

The index for oil products is based on data provided on the monthly basis by ministry of petroleum. The index is depending on consumed amounts of petroleum products.

Electricity

The index for electricity is based on consumption by households, commercial establishment and industrial units in KWH, as provided on the monthly basis by ministry of Electricity and Energy.

Construction

The index for construction is based on Sales of cement and iron bar. The data source is the monthly bulletin of the Ministry of Supply and Internal Trade has been taken as variables controlling that activity.

Transportation

The index for Transportation is based on variables that reflect the various modes of transportation in economy and includes railway tonnage, road tonnage, and maritime tonnage, railway passengers and road passengers. The data is provided on the monthly basis by Ministry of Transportation.

Suez Canal

The index for the Suez Canal is based on the fees collected from ships traveling through the Canal. The receipts are shown in US Dollars and are provided on the monthly basis by the Suez Canal Authority.

Tourism

The index for tourism is based on the number of tourist and the number of nights spent in country. The data is provided on the monthly basis by ministry of tourism.

Production Index is under the continuous development. In the light of "transparency" principle, any amendment-taking place in its methodology will be circulated immediately.

Two types of analysis are used to analyze the various indices:

First: Short Term Analysis

- For the current year, monthly change rate is calculated for the latest monthly compared with the previous month.
- Similarly, the same calculation is done for the corresponding two months in the previous year.

Second: Long Term Analysis

- Annual change rate is calculated for the latest month (current year) compared with the corresponding month (previous year)

- A similar calculation is done for the previous month in the current and previous years

The equations used for the preparation of the Monthly Production Index:

1- If the index is made up of one variable

$$\left[\frac{\text{Size of Variable in the Comparison month}}{\text{Size of Variable in the Base month}} \right] \times 100$$

2- If the index is made up of many variables

$$\left[\frac{\text{Size of Variable A in the Comparison month}}{\text{Size of Variable A in the Base month}} \right] \times \text{relative weight of variable A to total variables} \quad \text{(A)}$$

$$\left[\frac{\text{Size of Variable B in the Comparison month}}{\text{Size of Variable B in the Base month}} \right] \times \text{relative weight of variable B to total variables} \quad \text{(B)}$$

Then the index is = A + B X 100

For example, the relative weight of the variable A depends on whether or not the elements of the activity can be collected, if the elements can be collected like the activities of electricity and construction, then:

$$\text{Relative weight of Variable A} = \frac{\text{Size of Variable A in the Comparison month}}{\text{Total of Variables in the Base month}}$$

In case, the elements of the activities cannot be collected such as the transportation and the tourism activities, then:

$$\text{Relative weight of Variable A} = \frac{\text{Size of Variable A in the comparison month}}{\text{Standard deviation of variable for the months of the base year}} \div X$$

Where X = Total standard deviations of the activity's variables